



Earthmoving equipment solutions

ASX Small to Mid Caps New York Conference

Keith Gordon
Managing Director



RENTAL | SALES | PARTS | ASSET MANAGEMENT



Earthmoving equipment solutions



Company Overview



RENTAL | SALES | PARTS | ASSET MANAGEMENT

What is Emeco?

◆ Quick facts...

- ◆ Provision of earthmoving equipment solutions to blue-chip miners around the globe
- ◆ Large equipment range from Caterpillar, Komatsu, Hitachi, Volvo and Liebherr
- ◆ Operations across Australia, Indonesia and North America
- ◆ Divisions: Dry-hire Rental, Sales, Parts and Asset Management

- ◆ Established Australia 1972
- ◆ Listed on ASX exchange (EHL:AU)
- ◆ Industry: Rental Auto/ Equipment
- ◆ Market cap A\$429.2M
- ◆ 52 week range A\$0.230 to A\$0.995

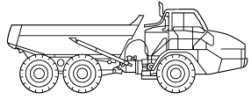
Market cap and 52 week price range as at 26 February 2010. Source: Bloomberg

Why do Customers choose Emeco?

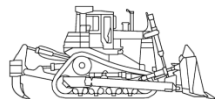
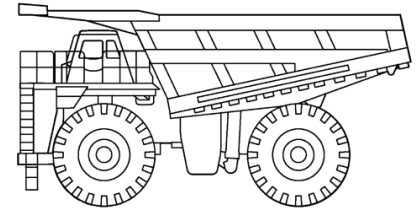
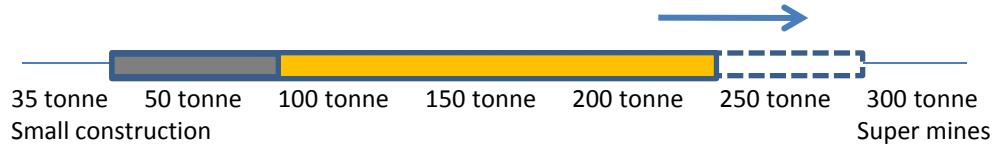


Asset profile

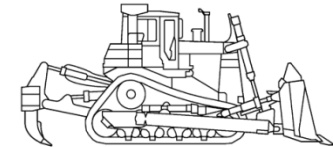
Independent supplier of well-maintained, best-in-class equipment



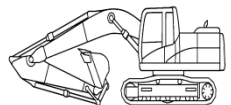
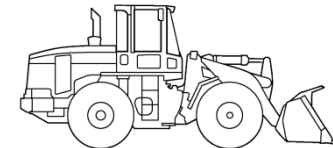
Truck



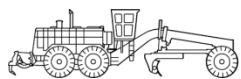
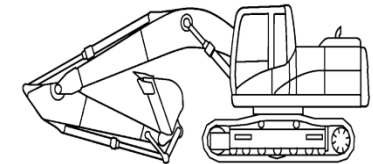
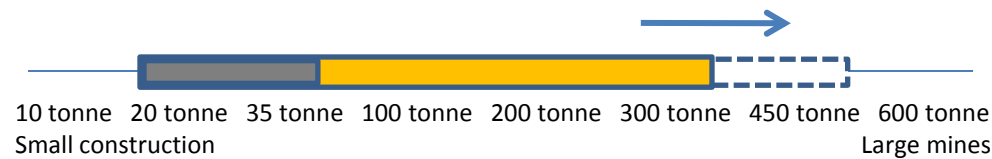
Dozer



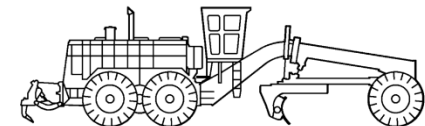
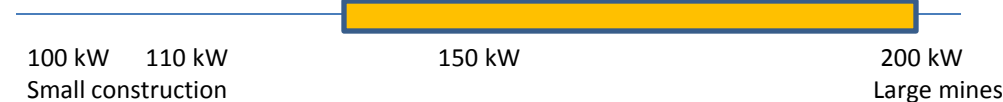
Loader



Excavator



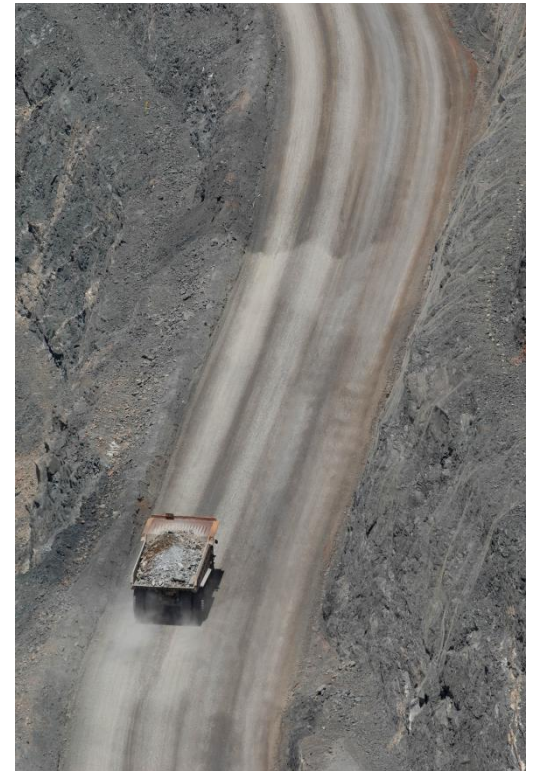
Grader



Where are we today?

◆ Current progress...

- ◆ Bolster corporate management team
- ◆ Decisive action taken on underperforming businesses
- ◆ Generation of cash through disposal of underperforming assets
- ◆ Asset deployment currently around 78%
- ◆ Focus on improving utilization in core operations to drive earnings
- ◆ Fleet evolution strategy underway
- ◆ ROC identified as unsatisfactory





Earthmoving equipment solutions

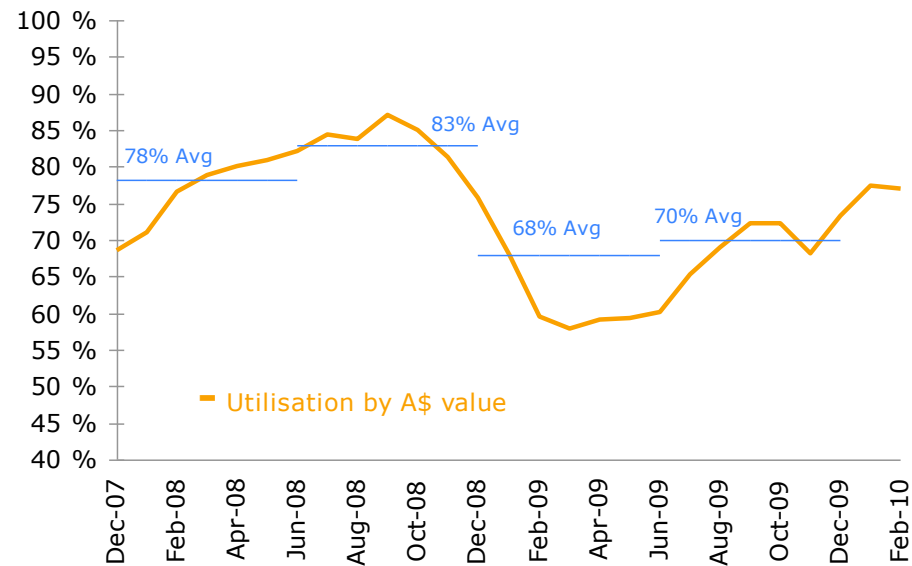
Markets & Drivers



RENTAL | SALES | PARTS | ASSET MANAGEMENT

Rental Fleet Utilization

Improving utilization in 1H10...



Key business drivers:

- ◆ Percentage of fleet working on customer projects (currently at ~78%)
- ◆ Mine application of equipment (single or double shift hours)
- ◆ Emeco's ability to deliver high mechanical availability
- ◆ Speed of redeployment between projects

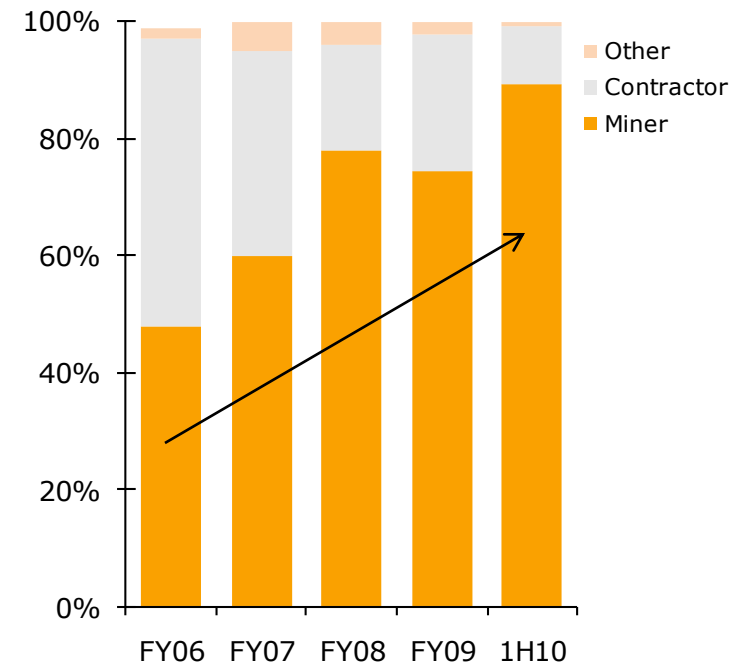
Customer exposure

Focusing on long-term supplier relationships with blue-chip customers

- ◆ ~70% revenue from large blue-chip customers
- ◆ Customer profile trending toward large mining houses
- ◆ Mix of miners and contractors demonstrates rental model appeals for variety of reasons
- ◆ Solid experience, past and present customers include:

Xstrata Coal	Anglo Coal	Rio Tinto Coal	
Rio Northparkes	Alcoa	Kidco	
Newcrest	FMG	Kagara	Xstrata Zinc
Leightons	BHP Billiton	Rio Tinto Iron Ore	

Evolution of customer type

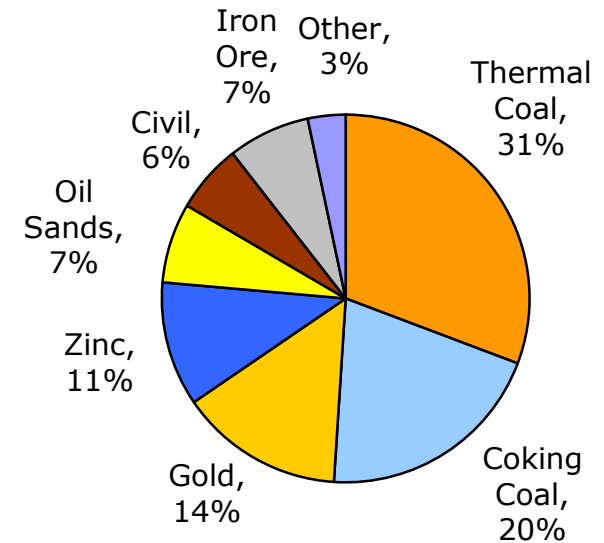


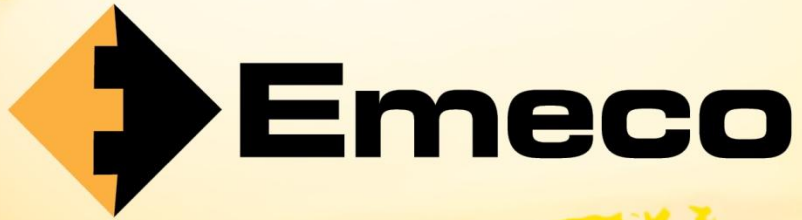
Leveraged to the mining cycle

Focus on increasing exposure to low cost producers in key commodities

- ◆ **Thermal coal** volumes forecast to increase in New South Wales, Australia and Kalimantan, Indonesia
- ◆ Exposure to West Australian **Iron ore** and Queensland **coking coal** expected to strengthen significantly over the coming period
- ◆ Exposure to world class **gold** producers in New South Wales, Western Australia and Indonesia
- ◆ Canadian **oil sands** activity increasing in 2010 with Emeco becoming more involved in core production works versus mine development
- ◆ Increasing **infrastructure** investments in Australia
- ◆ **Civil** business in North America and Europe non-core to Emeco's business going forward

Commodity exposure





Earthmoving equipment solutions

Performance

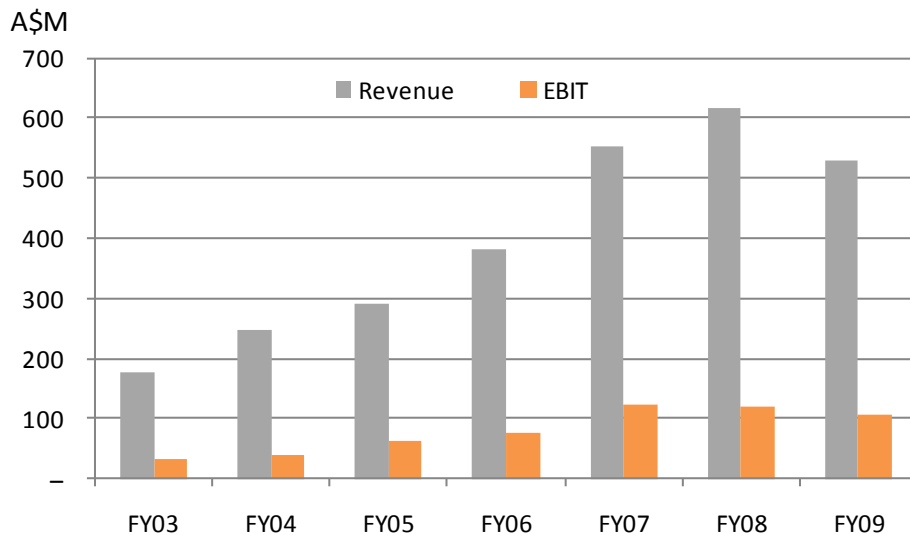


RENTAL | SALES | PARTS | ASSET MANAGEMENT

Financial Performance

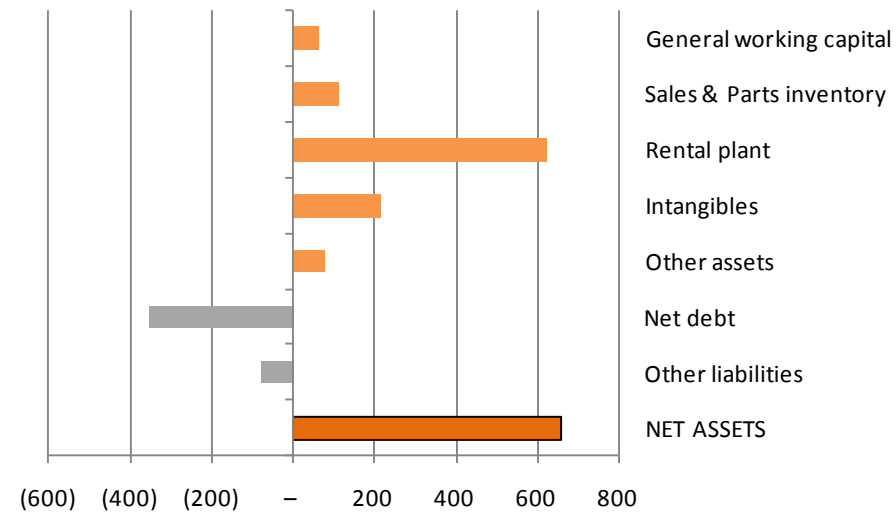
Focus on improving ROC and EBIT growth

Revenue & EBIT performance



- ◆ EBIT CAGR of 21.8% [FY02 to FY09]

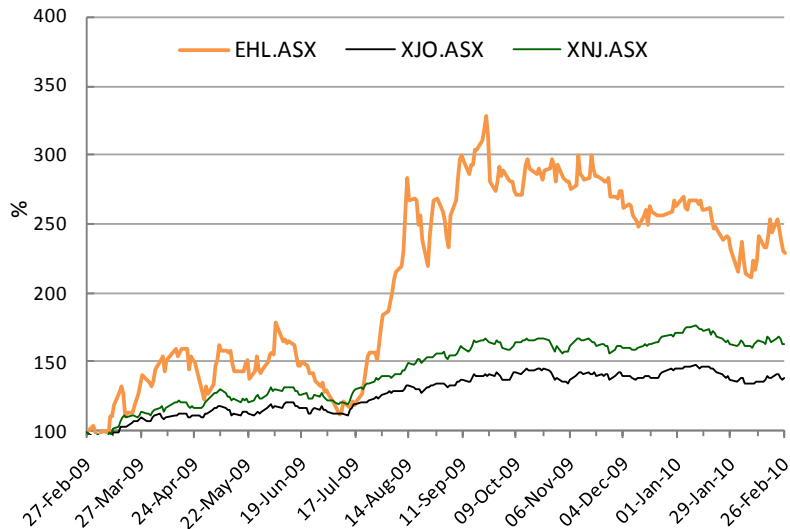
Balance sheet composition (31 Dec 2009)



- ◆ NTA of A\$449.7M, equivalent to \$0.712 as at 31 December 2009
- ◆ High quality earthmoving equipment equates to 62% of Total assets
- ◆ A\$595M senior debt facility

Share Performance

Indexed performance



- ◆ Over the past 12 months EHL share price has tracked above the ASX 200 and ASX Industrial indices

Emeco 52-week share price



- ◆ **Substantial shareholders:**
 - ◆ Franklin Resources 9.52%
 - ◆ Blackrock Investment 7.74%
 - ◆ Maple-Brown Abbott 5.06%
 - ◆ 70% institutional investors



Earthmoving equipment solutions

Strategy & Outlook



RENTAL | SALES | PARTS | ASSET MANAGEMENT

Strategy

Immediate focus to improve core business while long-term strategic plan is finalised

Short-Term

- ◆ Exit Europe
- ◆ Exit Central Appalachian coal and restructure North America
- ◆ Liberate cash from underperforming assets
- ◆ Reduce debt
- ◆ Leverage earnings growth from installed asset base
- ◆ Evaluate investments in specific equipment asset classes
- ◆ Reposition fleet away from small civil to large mining fleet

Medium to Long-Term

- ◆ Long term strategic plan under development
- ◆ Focus will be on long term returns to Shareholders and improving ROC
- ◆ Further communication with the market as plan completed
- ◆ Safety will always remain top priority

Outlook

Emeco's performance is highly leveraged to mining recovery currently underway

Volumes

- ◆ Both mining development and production activity undergoing positive step-change as business confidence improves
- ◆ Thermal coal, coking coal and iron ore volumes growing rapidly in Asia Pacific
- ◆ Canadian oil sands development activity has recommenced
- ◆ Other commodities undergoing resurgence

Equipment Capacity

- ◆ Short term excess capacity is now returning to work as activity recommences over FY10
- ◆ Market availability of larger mining equipment now tightening
- ◆ Small civil equipment market in North America & Europe remains in oversupply – continually reducing exposure

Capital Availability

- ◆ General recovery of credit flows expected to take longer than resource recovery
- ◆ Some customers likely to remain cautious on capex in medium term

Forecasting NPAT of \$40 million to \$44 million in year ending 30 June 2010



Earthmoving equipment solutions

Questions

For further information visit our website at
www.emecogroup.com



RENTAL | SALES | PARTS | ASSET MANAGEMENT

Company Contact Details

**Thank you for your interest in Emeco.
Further investor enquiries should be directed to:**

- ◆ **Keith Gordon** Managing Director & CEO
- ◆ **Stephen Gobby** CFO
- ◆ **Graham Borgerson** Investor Relations

+61 8 9420 0222

www.emecogroup.com



Earthmoving equipment solutions

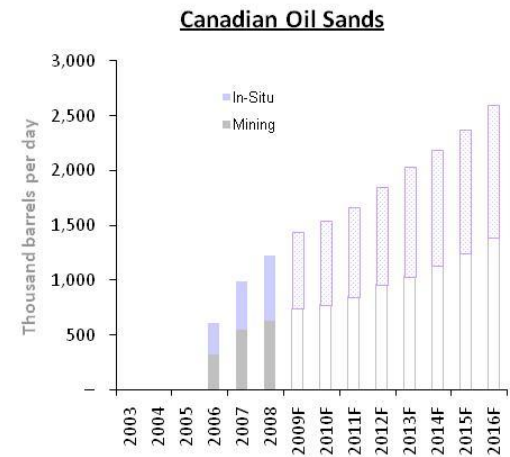
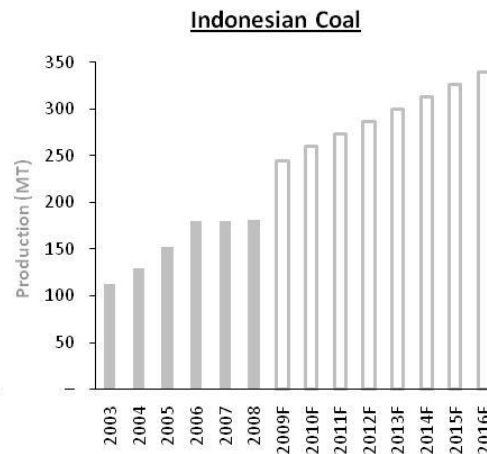
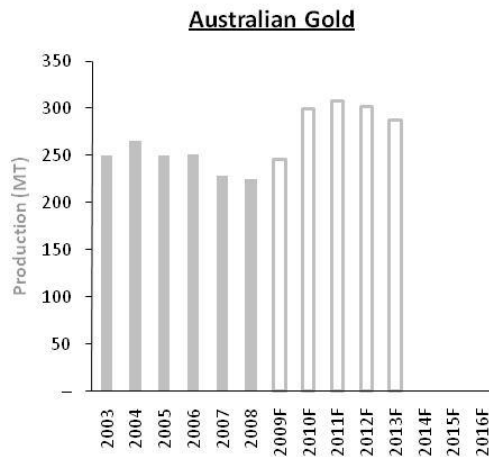
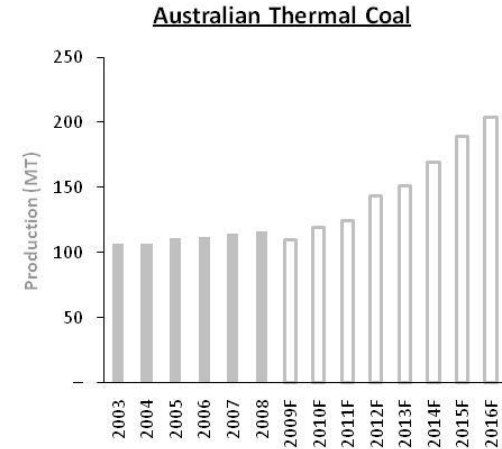
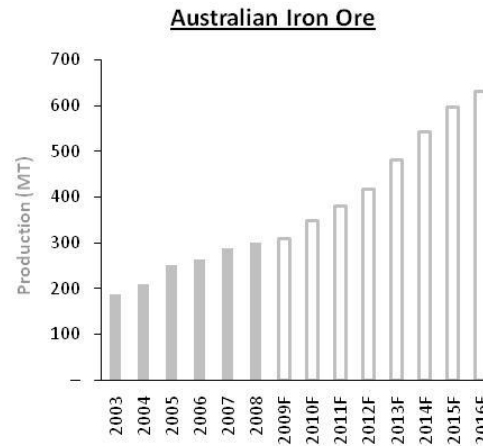
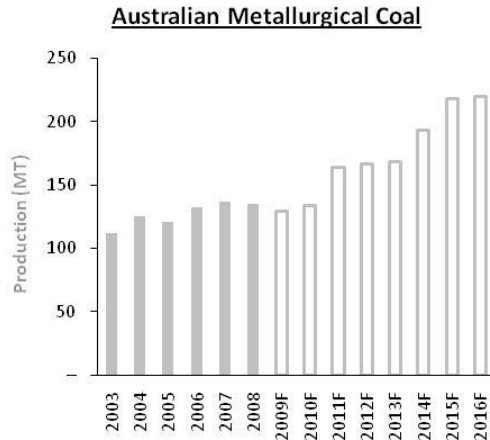
Appendix



RENTAL | SALES | PARTS | ASSET MANAGEMENT

Organic Growth Opportunities

End-market volumes forecast to increase



Source: ABARE Commodity Outlook, (CAPP) Canadian Association of Petroleum Producers Crude Oil Forecast 2009-2025, Ministry of Energy and Mineral Resources – Republic of Indonesia 20

Financial Overview

◆ Operating Profit statement, 6 month evolution to 31 December 2009 (A\$M)

A\$ Millions	1H08 A\$M	2H08 A\$M	1H09 A\$M	2H09 A\$M	1H10 A\$M
Revenue	288.2	329.7	309.8	218.4	208.5
EBITDA	98.6	114.8	128.6	82.3	82.5
<i>margin (%)</i>	34.2	34.8	41.5	37.7	39.6
EBIT	55.4	64.9	69.7	36.4	32.1
<i>margin (%)</i>	19.2	19.7	22.5	16.7	15.4
NPATA	31.4	37.2	39.2	18.7	13.8
NPAT	30.5	37.0	39.0	18.6	13.6
EPS (cps)	4.8	5.9	6.2	2.9	2.2
DPS (cps)	2.0	2.5	2.0	2.0	0.0
Invested Capital	1,044.8	1,098.4	1,147.9	1,170.3	1,128.3
ROC (%)	11.5%	10.9%	11.7%	9.1%	6.0%

For full financial information visit our website at
www.emecogroup.com/view/investors-centre

Financial Overview

◆ Cash Flow, 6 month evolution to 31 December 2009 (A\$M)

A\$ Millions	1H08	2H08	1H09	2H09	1H10
	A\$ m	A\$ m	A\$ m	A\$ m	A\$ m
EBITDA	98.0	115.4	125.7	80.9	77.6
General Working Capital	(3.8)	(15.7)	23.9	(8.2)	5.3
Sales & Parts Inventory	(60.6)	58.5	(14.3)	30.4	2.0
Interest & Borrowing costs	(12.0)	(12.3)	(17.0)	(12.8)	(9.2)
Income tax payments	(7.9)	(6.1)	(25.5)	(7.6)	(9.7)
Cash flow from Operating Activities	13.7	139.8	92.8	82.7	66.0
Rental Capital Expenditure	(89.4)	(114.4)	(77.4)	(30.3)	(97.8)
Other Property, Plant & Equipment	(6.8)	1.7	(3.2)	(4.7)	(7.4)
Disposals	15.4	28.4	8.9	12.4	14.6
Cash flow from Investing Activities	(80.9)	(84.2)	(71.7)	(22.6)	(90.6)
Dividends	(15.7)	(12.5)	(15.7)	(12.5)	(12.6)
Other financing activities	-	(1.0)	-	(7.5)	-
Cash flow from Financing Activities	(15.7)	(13.5)	(15.7)	(20.0)	(12.6)
Free Cash flow to reduce Debt	(82.9)	42.1	5.4	40.1	(37.2)

Note: EBITDA excludes non-cash items for purpose of cash flow

Financial Overview

◆ Balance Sheet at 31 December 2009 (A\$M)

A\$ Millions	Dec 07 A\$ m	Jun 08 A\$ m	Dec 08 A\$ m	Jun 09 A\$ m	Dec 09 A\$ m
General working capital	83	93	95	60	63
Sales & Parts inventory	203	144	167	135	113
Rental plant	557	571	643	623	620
Intangibles	223	224	235	216	214
Other assets	68	72	65	68	76
Net debt	(396)	(348)	(412)	(331)	(352)
Other liabilities	(52)	(54)	(57)	(88)	(69)
Net Assets	686	702	736	683	663
Facilities Headroom	161.5	208.8	273.6	331.2	301.5
Interest Cover	10.2	9.2	9.7	8.1	6.3
Net Debt: EBITDA	1.9	1.6	1.7	1.8	2.7
Net Debt: Equity	52%	50%	56%	49%	53%

◆ Funding Facilities at 31 December 2009 (A\$M)

Funding Facility	Facility limit (A\$M)	Drawn (31 Dec 09)	Headroom (A\$M)	Maturity
Multi-Currency Debt Facility	595	355	240	Aug 2011
Working Capital Facility	33	-	33	Range
Finance Lease	26	8	18	Range
Total	654	363	291	

Disclaimer

Reliance on third party information

The information and views expressed in this Presentation were prepared by Emeco Holdings Ltd (the **Company**) and may contain information that has been derived from publicly available sources that have not been independently verified. No representation or warranty is made as to the accuracy, completeness or reliability of the information. No responsibility or liability is accepted by the Company, its officers, employees, agents or contractors for any errors, misstatements in or omissions from this Presentation.

Presentation is a summary only

This Presentation is information in a summary form only and does not purport to be complete. It should be read in conjunction with the Company's 2009 financial report. Any information or opinions expressed in this Presentation are subject to change without notice and the Company is not under any obligation to update or keep current the information contained within this Presentation.

Not investment advice

This Presentation is not intended and should not be considered to be the giving of investment advice by the Company or any of its shareholders, directors, officers, agents, employees or advisers. The information provided in this Presentation has been prepared without taking into account the recipient's investment objectives, financial circumstances or particular needs. Each party to whom this Presentation is made available must make its own independent assessment of the Company after making such investigations and taking such advice as may be deemed necessary.

No offer of securities

Nothing in this Presentation should be construed as either an offer to sell or a solicitation of an offer to buy or sell Company securities in any jurisdiction.

Forward looking statements

This Presentation may include forward-looking statements. Although the Company believes the expectations expressed in such forward-looking statements are based on reasonable assumptions, these statements are not guarantees or predictions of future performance, and involve both known and unknown risks, uncertainties and other factors, many of which are beyond the Company's control. As a result, actual results or developments may differ materially from those expressed in the statements contained in this Presentation. Investors are cautioned that statements contained in the Presentation are not guarantees or projections of future performance and actual results or developments may differ materially from those projected in forward-looking statements.

No liability

To the maximum extent permitted by law, neither the Company nor its related bodies corporate, directors, employees or agents, nor any other person, accepts any liability, including without limitation any liability arising from fault or negligence, for any direct, indirect or consequential loss arising from the use of this Presentation or its contents or otherwise arising in connection with it.

Company Contact Details

**Thank you for your interest in Emeco.
Further investor enquiries should be directed to:**

- ◆ **Keith Gordon** Managing Director & CEO
- ◆ **Stephen Gobby** CFO
- ◆ **Graham Borgerson** Investor Relations

+61 8 9420 0222

www.emecogroup.com